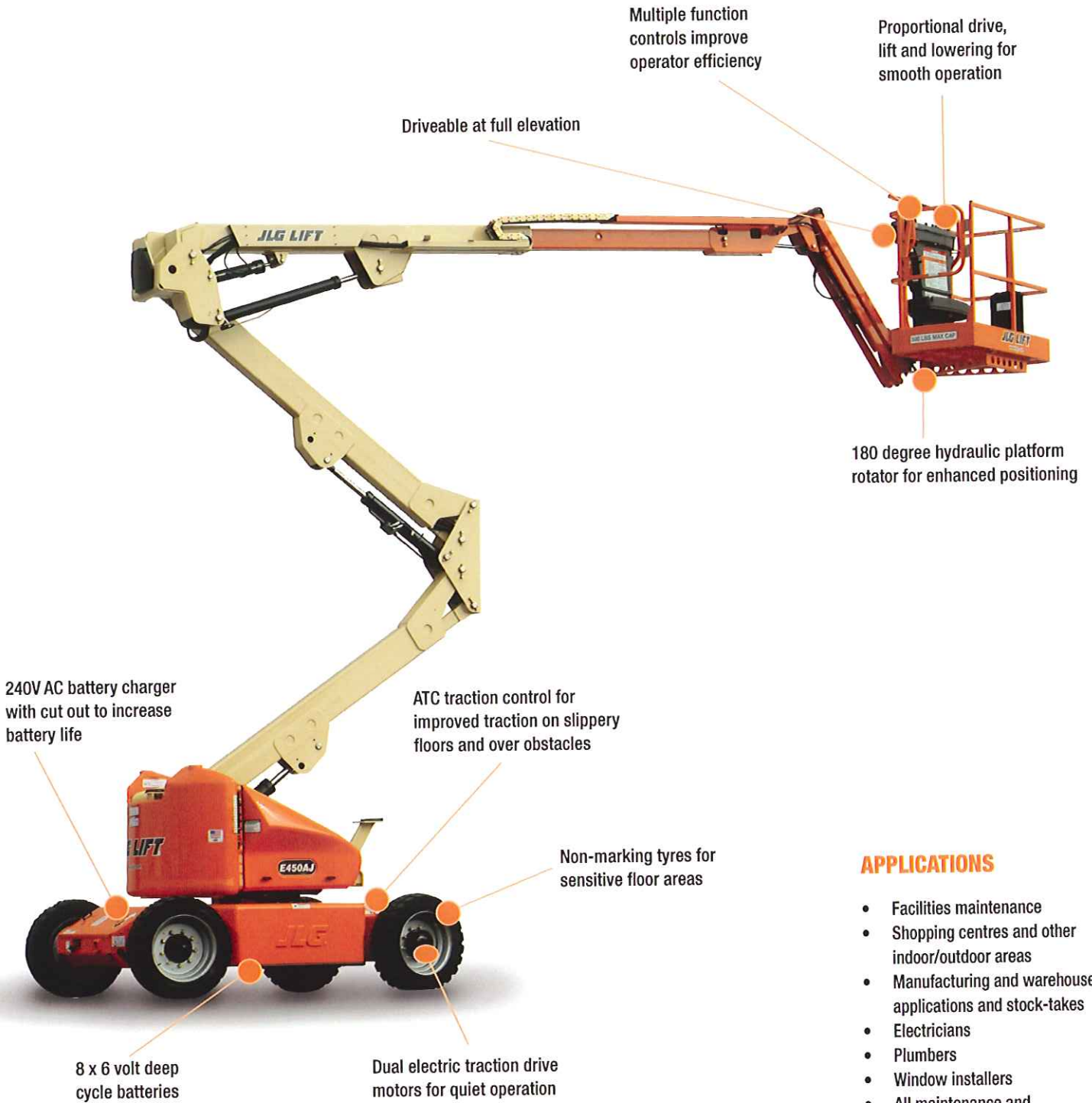


# E450AJ Electric Articulating Boom Lift



240V AC battery charger with cut out to increase battery life

ATC traction control for improved traction on slippery floors and over obstacles

Non-marking tyres for sensitive floor areas

8 x 6 volt deep cycle batteries

Dual electric traction drive motors for quiet operation

Multiple function controls improve operator efficiency

Proportional drive, lift and lowering for smooth operation

Driveable at full elevation

180 degree hydraulic platform rotator for enhanced positioning

## APPLICATIONS

- Facilities maintenance
- Shopping centres and other indoor/outdoor areas
- Manufacturing and warehouse applications and stock-takes
- Electricians
- Plumbers
- Window installers
- All maintenance and construction work

# E450AJ Electric Articulating Boom Lift

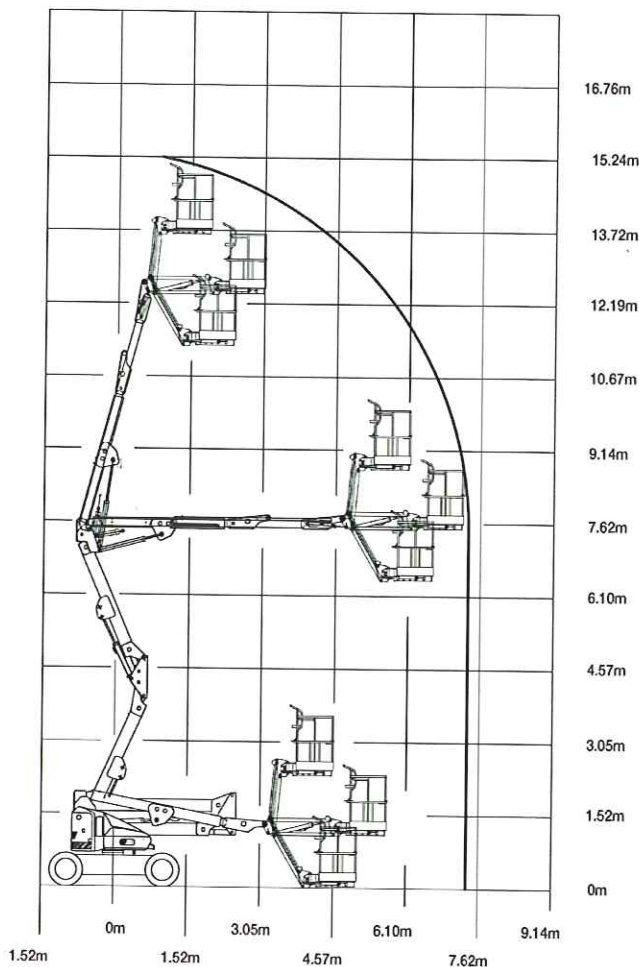


## QUESTIONS TO ASK

- What are the ground conditions in the work area?
- What is the working height needed for the job?
- What is the up and over reach required for the job?
- Do you need an extension lead outlet in the platform?
- Do you need non-marking tyres?
- Do you have 240V AC power on site?

## KEY SELLING POINTS

- Smooth control, proportional electric drive, with two speed ranges
- Proportional lift and swing controls at the platform
- Jib boom and basket rotate
- Cylinder boots protect cylinder rods from overspray and contaminants
- Non-marking urethane filled tyres
- Multi axis 4 degree level sensor.
- Plug in JLG analyser at platform and base to indicate system functions for servicing and adjustment



## SPECIFICATIONS

### Performance:

Platform Height (max.)	13.72m
Working Height	15.72m
Platform Rotation Angle	180°
Jib Raise Angle	86°
Jib Lower Angle	55°
Jib Articulation Range	141°
Maximum Horizontal Outreach	7.24m
Platform Capacity	230kg
Slewing Angle	360°
Continuous Slew	No

### Dimensions:

Stowed Length	6.50m
Stowed Height	2.01m
Overall Width	1.75m
Wheelbase	2.01m
Ground Clearance	0.22m
Platform Width	1.52m
Platform Length	0.76m
Overall Jib Length	1.24m
Tailswing	0m

### Power:

Power Source	Electric DC
DC Voltage	48V
DC Power	370 Amp h

### Travel:

Tyre Size	240/55-17.5
Tyre Type	Foam Fill
Inside Turn Radius	0.61m
Outside Turn Radius	3.15m
Gradeability	30%

### Weights and Capabilities:

Hydraulic Tank Capacity	15 Ltr
Operating Weight	6,670kg