

FORKFORCE[®]

A SERIES FORKLIFT TRUCK

A series 2.0-3.5 ton diesel forklift

A series 2.0-3.5 ton Gasoline / LPG forklift



Visit our brand new website:
forkforce.com

FORKFORCE[®]

1300 4A FORK
1300 423675



SALES



HIRE



SERVICE



REPAIRS



PARTS



ATTACHMENTS

Engineering for driver

Fork Force's New "A" Series Forklift is engineering for the driver. Fork Force engineers have focused on improving the comfort and safety for new A series forklifts, with lower noise levels, less vibration, more safety, and every small detail carefully designed prepared for the driver.

-Comfort-

Fork Force special display with 3.5" LCD
Wider foot room & Suspension foot brake.
Dual suspension system
New hand parking brake device with button greatly reduces fatigue in operation.
Small diameter steering wheel with new adjustor ✓

1

-Safety & Stability-

Wide view mast
High strength safe guard/cabin
Muffler & Engine protective system
Lower centre of gravity ✓

2

-Easily maintenance-

Bigger checking & repair space
Compact wire distribution
New type oil tank cap ✓

3

-Reliability & Exchangeability-

Triplex plate overhead guard
Exchangeable components ✓

4

5

-Energy saving & Environmental protection-

New noise isolation material
Powerful steering system with lower fuel consumption
Environmentally-aware design ✓



Comfort, safe and stable design

Engineering from the perspective of drivers



1

Fork Force special display with 3.5" LCD

Fork Force A series forklift adopts 3.5" LCD display, tailored specifically for drivers, aimed at increasing the convenience and comfort in view of the display data when driving and operating forklift. ✓



2

Wider foot room & Suspension foot brake

New spacious foot room



New spacious foot room design expands the space, guarantee drivers access the forklift comfort, convenience and safety. ✓



New suspension pedals

At the same time, new suspension pedals provide extra foot space helps significantly reduce the driver's fatigue, increase operator comfort. ✓

3

New hand parking brake

New hand parking brake device with button greatly reduces fatigue in operation, lighter and safer. ✓

Reduces fatigue

Lighter and safer

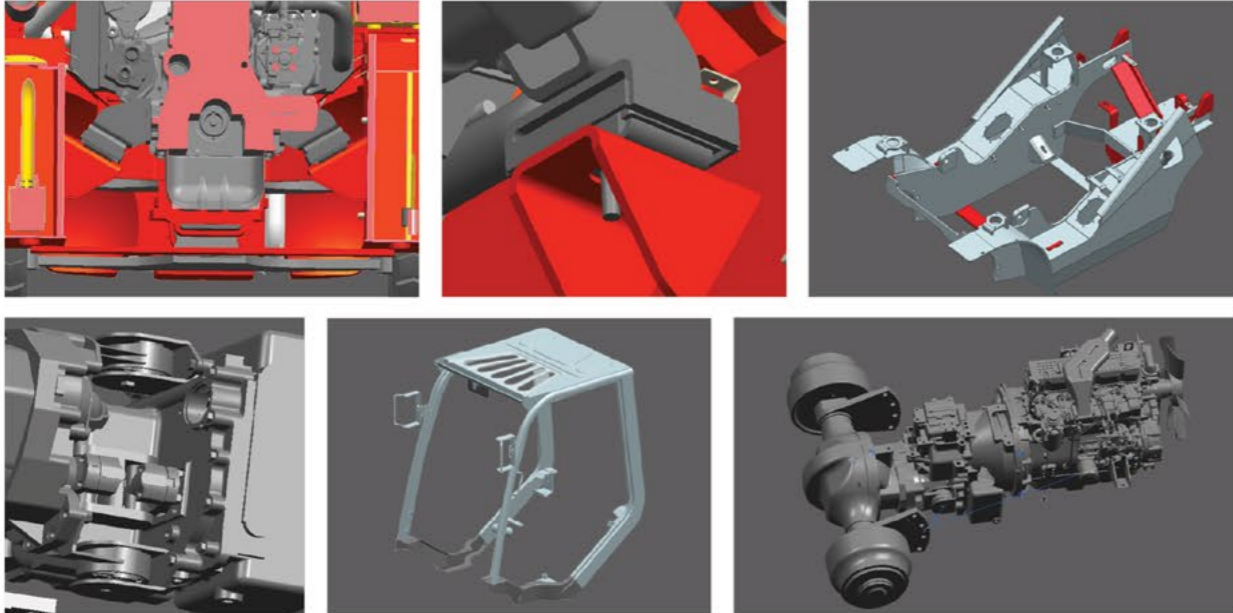


4 Dual suspension system

In A series forklift, Fork Force is specialized R & D to launch dual-suspension system, for further vibration decreasing.

Dual suspension system—Full floating safeguard/cabin system & New engine vibration damper

Dual suspension system— Suspension transmission replaces traditional rigid connections, greatly improving the forklift's vibration and noise. ✓



5 Small diameter steering wheel with new adjustor

Size of A series forklift steering wheel is reduced, outer diameter becomes $\Phi 300$, small-diameter steering wheel is easier to manipulate, more responsive, it ensures the mobility when working in a narrow space.

Meanwhile, steering wheel adjustor has been improved, convenient adjusting steering wheel increases angle to 8° , adapting to different drivers. ✓



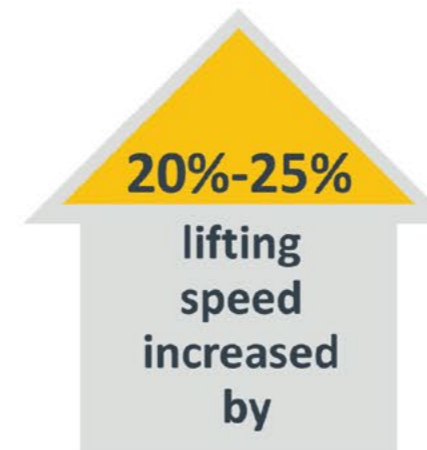
6 Wide view mast

Overall Fork Force A series forklift mast adopts wide view mast, outside width of the mast increases from the M series 690 mm to 720 mm, significantly improves the driver's front field of view, reduces dead zones, and increases the safety and comfort of the operation. ✓



7 Improved lifting speed

Lifting speed increased by 20%—25%. ✓



8

High strength safe guard/cabin



Cabin for A series forklift adopts profiled steel overhead guard, all around inserted.

High strength roof enhances the forklift reliability and safety, and high strength organic glass ceiling as standard also makes forklift body looks more beautiful.

Improve mast composite roller structure, thereby greatly enhancing the forklift reliability. ✓

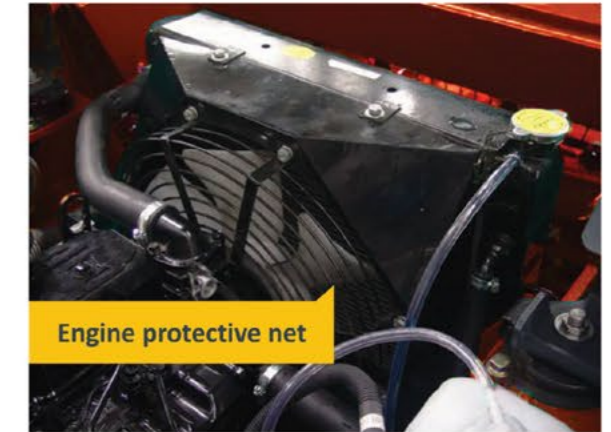
9

Muffler & Engine protective system

Muffler protective net and engine protective net equipped in A series forklift as standard makes the forklift be more safer when working. ✓



Muffler protective net



Engine protective net

10

Lower centre of gravity

Lower centre of gravity, increase the driver's rear field of view. A series forklift reduces 50 mm of centre of gravity on base of M series forklift. Lower counterweight greatly increases the rear vision, avoid safety hazards when driver reversing. ✓



Lower counterweight

Lower centre of gravity
> 50mm <



Energy conservation and emission reduction, easily installed and serviced.

Highlight the humanized design!

1

Bigger checking & repair space



Fork Force designed larger repair space for A series, it's convenient to have big checking and repairing.

2

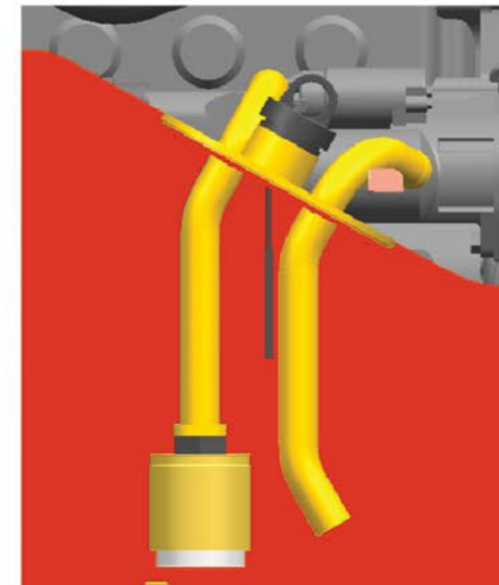
Compact wire distribution



3

New type oil tank cap

New type oil tank cap combined with breather & dipstick.



4

Exchangeable components



Front fender is installed with holes

Engine cover, instrument panel, safeguard, display and most of the operation components are exchangeable between 1- Mini 4 ton forklifts.

Front fender is installed with holes, which is very convenient for the customer to put on for double front tires.

5 Triplex plate overhead guard

Fork Force Australia A series forklift overhead guard is developed with three pieces, it is consist of left side, right side and top basket, the advantage is the cabin except top basket can be installed directly on the standard safeguard. This design, greatly improves the efficiency and ease, the forklift operator can put on and off the cabin easily. ✓



6 New noise isolation material



Special muffler and new noise isolation material, reducing noise levels by more than 4DB. ✓

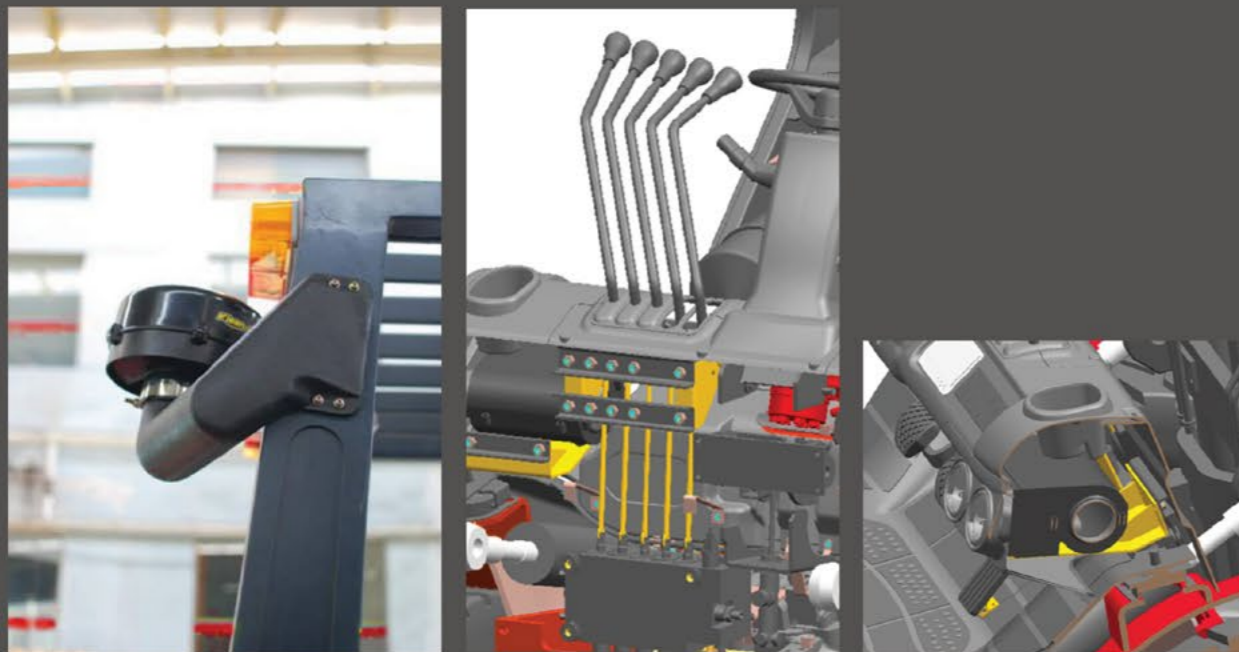
7 Powerful steering system with lower fuel consumption

New dynamic load-sensing hydraulic steering system improves work efficiency and energy conservation, with fuel consumption reduced by 8%. ✓



Various of kinds of options especially for A series

- 1 New designed heater
- 2 5-way hydraulic valves
- 3 Pre-cleaner



A series 2.0-3.5t diesel forklift

1 Model			FD20T	FD25T	FD30T	FD35T
2 Type			AWE5/AWV5/AG(2)5/AWV3/AGJ3			
3 Power Type			Diesel			
4 Rated Capacity		kg	2000	2500	3000	3500
5 Load Centre		mm	500	500	500	500
6 Lift height		mm	3000	3000	3000	3000
7 Mast tilt angle		F/R	6/12	6/12	6/12	6/12
8 Fork		L×W×T	1070×122×40	1070×122×40	1070×125×45	1070×130×50
9		Regulating range	250-1000	250-1000	250-1060	260-1060
10 Front overhang		mm	475	475	490	501
11 Rear Overhang		mm	485	544	543	623
12 Min. ground clearance (Bottom of mast)		Unladen	130	130	155	155
13		Laden	120	120	145	145
14 Min. ground clearance (Bottom of frame)		Unladen	125	125	145	145
15		Laden	115	115	130	130
16 Overall dimensions		Overall length (without forks)	2560	2620	2704	2804
17		Overall width	1150	1150	1210	1210
18		Overall height	Overhead guard height	2130	2130	2155
19			Mast	2010	2010	2075
20			Mast extended height	3990	3990	4100
21 Min. turning radius		mm	2180	2230	2450	2520
22 Wheelbase		mm	1600	1600	1700	1700
23 Traction pin height from the ground		mm	250	250	480	480
24 Lowered seat to overall guard inside height		mm	1100	1100	1100	1100
25 Tyre pressure		Front	0.86	0.86	0.97	0.97
26		Rear	0.86	0.86	0.79	0.79
27 Tread		Front	890	890	1000	1000
28		Rear	920	920	970	970
29 Tire center height		Unladen	Front	320	320	345
30			Rear	250	250	260
31 from the ground		Laden	Front	310	310	330
32			Rear	265	265	280
33 Speed		Travel (Unladen/Laden)	18/17.5	18/17.5	19/18	19/18
34		Lifting(Unladen/Laden)	640/610	640/610	550/520	430/410
35		Lowering(Unladen/Laden)	380/420	380/420	400/380	400/380
36 Max.Drawbar pull (Unladen/Laden)		KN	15/17	15/17	15/17	15/17
37 Max.Gradeability (Unladen/Laden)		%	20	20	20	20
38 Ramp parking brake		%	15	15	15	15
39 Braking distance		m	≤6	≤6	≤6	≤6
40 System pressure		MPa	20	20	20	20
41 Self weight		kg	3300	3590	4300	4680
42 Weight Distribution		Laden	Front	4630	5320	6495
43			Rear	870	770	805
44		Unladen	Front	1500	1630	1800
			Rear	1800	1960	2500

A series 2.0-3.5t Gasoline/LPG forklift

1 Model			FG20T	FG25T	FG30T	FG35T
2 Type			AWA5			
3 Power Type			Gasoline/LPG			
4 Rated Capacity		kg	2000	2500	3000	3500
5 Load Centre		mm	500	500	500	500
6 Lift height		mm	3000	3000	3000	3000
7 Mast tilt angle		F/R	6/12	6/12	6/12	6/12
8 Fork		L×W×T	1070×122×40	1070×122×40	1070×125×45	1070×130×50
9		Regulating range	250-1000	250-1000	250-1060	260-1060
10 Front overhang		mm	475	475	490	501
11 Rear Overhang		mm	485	544	543	623
12 Min. ground clearance (Bottom of mast)		Unladen	130	130	155	155
13		Laden	120	120	145	145
14 Min. ground clearance (Bottom of frame)		Unladen	125	125	145	145
15		Laden	115	115	130	130
16 Overall dimensions		Overall length (without forks)	2560	2620	2704	2804
17		Overall width	1150	1150	1210	1210
18		Overall height	Overhead guard height	2130	2130	2155
19			Mast	2010	2010	2075
20			Mast extended height	3990	3990	4100
21 Min. turning radius		mm	2180	2230	2450	2520
22 Wheelbase		mm	1600	1600	1700	1700
23 Traction pin height from the ground		mm	250	250	480	480
24 Lowered seat to overall guard inside height		mm	1100	1100	1100	1100
25 Tyre pressure		Front	0.86	0.86	0.97	0.97
26		Rear	0.86	0.86	0.79	0.79
27 Tread		Front	890	890	1000	1000
28		Rear	920	920	970	970
29 Tire center height		Unladen	Front	320	320	345
30			Rear	250	250	260
31 from the ground		Laden	Front	310	310	330
32			Rear	265	265	280
33 Speed		Travel (Unladen/Laden)	18/17.5	18/17.5	19/18	19/18
34		Lifting(Unladen/Laden)	640/610	640/610	550/520	430/410
35		Lowering(Unladen/Laden)	380/420	380/420	400/380	400/380
36 Max.Drawbar pull (Unladen/Laden)		KN	15/17	15/17	15/17	15/17
37 Max.Gradeability (Unladen/Laden)		%	20	20	20	20
38 Ramp parking brake		%	15	15	15	15
39 Braking distance		m	≤6	≤6	≤6	≤6
40 System pressure		MPa	20	20	20	20
41 Self weight		kg	3300	3590	4300	4680
42 Weight Distribution		Laden	Front	4630	5320	6495
43			Rear	870	770	805
44		Unladen	Front	1500	1630	1800
			Rear	1800	1960	2500



MITSUBISHI

Type:WV5/WV3
Model:S4S (EuIII/EPAIII)
Rated output:35.3kw/2250rpm
Rated torque:
177N·m/1700rpm
No. of cylinder:4
Bore×Stroke:94×120mm
Displacement:3.331L



YANMAR

Type:WE5
Model:4TNE98(EuIII/EPAIII)
Rated output:42.1kw/2300rpm
Rated torque:
186.206N·m/1700rpm
No. of cylinder:4
Bore×Stroke:98×110mm
Displacement:3.318L



XINCHAI

Type:GJ3
Model:A498BT1(EuIII/EPAIII)
Rated output:38.8kw/2400rpm
Rated torque:
186N·m/1600-1800rpm
No. of cylinder:4
Bore×Stroke:98×106mm
Displacement:3.168L



NISSAN

Type:WA5
Model:K25
Rated output:37.4kw/2300rpm
Rated torque:171.2N·m/1600rpm
No. of cylinder:4
Bore×Stroke:89×100mm
Displacement:2.483L



DEUTZ

Type:AG(2)5
Model:CA498-05T3(EuIII)
Rated output:36.9kw/2500rpm
Rated torque:
190N·m/1800rpm
No. of cylinder:4
Bore×Stroke:98×106mm
Displacement:3.168L

