



DP/GP15N - DP/GP18N - DP/GP20CN

DP/GP20N - DP/GP25N - DP/GP30N

DP/GP35N

Specifications

Engine powered lift trucks

1.5 - 3.5 tonnes

Characteristics		Cat Lift Trucks	Cat Lift Trucks	Cat Lift Trucks			Cat Lift Trucks	Cat Lift Trucks	Cat Lift Trucks	Cat Lift Trucks	Cat Lift Trucks	Cat Lift Trucks	Cat Lift Trucks		Cat Lift Trucks	Cat Lift Trucks	Cat Lift Trucks
1.01	Manufacturer (abbreviation)																
1.02	Manufacturer's model designation	DP15N	DP18N	DP20CN			DP20N	DP25N	DP30N	DP35N	GP15N	GP18N	GP20CN	GP20N	GP25N	GP30N	GP35N
1.03	Power source: (battery, diesel, LP gas, petrol)	Diesel	Diesel	Diesel			Diesel	Diesel	Diesel	Diesel	LP gas	LP gas	LP gas	LP gas	LP gas	LP gas	LP gas
1.04	Operator type: pedestrian, (operator)-standing, -seated	Seated	Seated	Seated			Seated	Seated	Seated	Seated	Seated	Seated	Seated	Seated	Seated	Seated	Seated
1.05	Load capacity	Q (kg)	1.500	1.750	2.000		2.000	2.500	3.000	3.500	1.500	1.750	2.000	2.000	2.500	3.000	3.500
1.06	Load center distance	c (mm)	500	500	500		500	500	500	500	500	500	500	500	500	500	500
1.08	Load distance, axle to fork face	x (mm)	400	400	415		455	455	490	490	400	400	415	455	455	490	490
1.09	Wheelbase	y (mm)	1400	1400	1400		1600	1600	1700	1700	1400	1400	1400	1600	1600	1700	1700
Weight																	
2.01	Truck weight, without load / including battery (simplex mast, lowest lift height)	kg	2560	2760	3100		3420	3710	4360	4770	2520	2710	3050	3310	3610	4250	4660
2.02	Axle loading with maximum load, front/rear (simplex mast, lowest lift height)	kg	3580 / 480	3940 / 570	4430 / 670		4690 / 730	5480 / 730	6530 / 830	7270 / 1000	3580 / 440	3940 / 520	4420 / 630	4650 / 660	5440 / 670	6490 / 760	7220 / 940
2.03	Axle loading without load, front/rear (simplex mast, lowest lift height)	kg	1110 / 1450	1060 / 1700	1120 / 1980		1500 / 1920	1480 / 2230	1780 / 2580	1720 / 3050	1110 / 1410	1060 / 1650	1110 / 1940	1460 / 1850	1440 / 2170	1730 / 2520	1680 / 2980
Wheels, Drive Train																	
3.01	Tyres: V=solid, L=pneumatic, SE=solid pneumatic - front/rear		SE / SE (L / L)	SE / SE (L / L)	SE / SE		SE / SE (L / L)	SE / SE (L / L)	SE / SE (L / L)	SE / SE (L / L)	SE / SE (L / L)	SE / SE (L / L)	SE / SE	SE / SE (L / L)	SE / SE (L / L)	SE / SE (L / L)	SE / SE (L / L)
3.02	Tyre dimensions, front		6.50-10	6.50-10	6.50-10		7.00-12	7.00-12	28x9-15	250-15	6.50-10	6.50-10	6.50-10	7.00-12	7.00-12	28x9-15	250-15
3.03	Tyre dimensions, rear		5.00-8	5.00-8	5.00-8		6.00-9	6.00-9	6.50-10	6.50-10	5.00-8	5.00-8	5.00-8	6.00-9	6.00-9	6.50-10	6.50-10
3.05	Number of wheels, front/rear (x=driven)		2x / 2	2x / 2	2x / 2		2x / 2	2x / 2	2x / 2	2x / 2	2x / 2	2x / 2	2x / 2	2x / 2	2x / 2	2x / 2	2x / 2
3.06	Track width (center of tyres), front	b10 (mm)	890	890	890		960	960	1060	1060	890	890	890	960	960	1060	1060
3.07	Track width (center of tyres), rear	b11 (mm)	900	900	900		980	980	980	980	900	900	900	980	980	980	980
Dimensions																	
4.01	Mast tilt, forwards/backwards	α/β °	6 / 10	6 / 10	6 / 10		6 / 10	6 / 10	6 / 10	6 / 10	6 / 10	6 / 10	6 / 10	6 / 10	6 / 10	6 / 10	6 / 10
4.02	Height with mast lowered (see tables)	h1 (mm)	2140	2140	2140		2145	2145	2165	2300	2140	2140	2140	2145	2145	2165	2300
4.03	Free lift (see tables)	h2 (mm)	80	80	80		100	100	100	100	80	80	80	100	100	100	100
4.04	Lift height (see tables)	h3 (mm)	3290	3290	3290		3300	3300	3270	3300	3290	3290	3290	3300	3300	3270	3300
4.05	Overall height with mast raised	h4 (mm)	4340	4340	4340		4360	4360	4340	4360	4340	4340	4340	4360	4360	4330	4360
4.07	Height to top of overhead guard	h6 (mm)	2145	2145	2145		2154	2154	2173	2183	2145	2145	2145	2154	2154	2173	2183
4.08	Seat height	h7 (mm)	1109	1109	1109		1114	1114	1114	1114	1109	1109	1109	1114	1114	1114	1114
4.12	Tow coupling height	h10 (mm)	290	290	290		310	310	330	340	290	290	290	310	310	330	340
4.19	Overall length	l1 (mm)	3330	3371	3429		3558	3625	3795	3860	3330	3371	3429	3558	3625	3795	3860
4.20	Length to fork face (includes fork thickness)	l2 (mm)	2260	2301	2359		2488	2555	2725	2790	2260	2301	2359	2488	2555	2725	2790
4.21	Overall width	b1/b2 (mm)	1065 / 1480	1065 / 1480	1065 / n.a.		1150 / 1640	1150 / 1640	1275 / 1710	1290 / 1710	1065 / 1480	1065 / 1480	1065 / n.a.	1150 / 1640	1150 / 1640	1275 / 1710	1290 / 1710
4.22	Fork dimensions (thickness, width, length)	s / e / l (mm)	35 x 100 x 1070	35 x 100 x 1070	35 x 100 x 1070		40 x 100 x 1070	40 x 100 x 1070	45 x 125 x 1070	45 x 125 x 1070	35 x 100 x 1070	35 x 100 x 1070	35 x 100 x 1070	40 x 100 x 1070	40 x 100 x 1070	45 x 125 x 1070	45 x 125 x 1070
4.23	Fork carriage to DIN 15 173 A/B/no		2A	2A	2A		2A	2A	3A	2A	2A	2A	2A	2A	2A	3A	3A
4.24	Fork carriage width	b3 (mm)	920	920	920		1000	1000	1000	1000	920	920	920	1000	1000	1000	1000
4.31	Ground clearance under mast, with load	m1 (mm)	110	110	110		115	115	135	150	110	110	110	115	115	135	150
4.32	Ground clearance at center of wheelbase, with load (forks lowered)	m2 (mm)	135	135	135		135	135	165	170	135	135	135	135	165	170	170
4.33	Working aisle width with 1000 x 1200 mm pallets, crosswise	Ast (mm)	3550	3580	3635		3855	3885	4070	4130	3550	3580	3635	3855	3885	4070	4130
4.34	Working aisle width with 800 x 1200 mm pallets, crosswise	Ast (mm)	3350	3380	3435		3655	3685	3870	3930	3350	3380	3435	3655	3685	3870	3930
4.35	Turning circle radius	Wa (mm)	1950	1980	2022		2196	2233	2380	2440	1950	1980	2022	2196	2233	2380	2440
4.36	Minimum distance between centers of rotation	b13 (mm)	555.5	555.5	555.5		716	716	782.4	782.4	555.5	555.5	555.5	716	716	782.4	782.4
Performance																	
5.01	Travel speed, with/without load	km/h	19 / 19.5	19 / 19.5	19 / 19.5		19 / 19.5	19 / 19.5	19 / 19.5	19 / 19.5	19 / 19.5	19 / 19.5	19 / 19.5	19 / 19.5	19 / 19.5	19 / 19.5	19 / 19.5
5.02	Lifting speed, with/without load	m/s	0.60 / 0.65	0.60 / 0.65	0.60 / 0.65		0.64 / 0.67	0.64 / 0.67	0.51 / 0.54	0.43 / 0.46	0.64 / 0.65	0.64 / 0.65	0.64 / 0.65	0.59 / 0.61	0.59 / 0.61	0.52 / 0.53	0.43 / 0.44
5.03	Lowering speed, with/without load	m/s	0.52 / 0.50	0.52 / 0.50	0.52 / 0.50		0.50 / 0.50	0.50 / 0.50	0.53 / 0.50	0.42 / 0.40	0.52 / 0.50	0.52 / 0.50	0.52 / 0.50	0.50 / 0.50	0.53 / 0.50	0.53 / 0.50	0.42 / 0.40
5.05	Rated drawbar pull, with/without load	N	11800 / 11500	11700 / 11500	11400 / 11500		17200 / 16700	17000 / 16600	16600 / 16600	15800 / 15800	15300 / 14800	15100 / 14700	14800 / 14800	15200 / 14900	15000 / 14800	17700 / 17700	16900 / 16900
5.07	Gradeability, with/without load	%	32 / -	28 / -	24 / -		35 / -	30 / -	24 / -	20 / -	26 / -	23 / -	28 / -	27 / -	23 / -	22 / -	19 / -
5.09	Acceleration time (10 metres) with/without load	s	-	-	-		-	-	-	-	-	-	-	-	-	-	-
5.10	Service brakes (mechanical/hydraulic/electric/pneumatic)		Hydraulic	Hydraulic	Hydraulic		Hydraulic	Hydraulic	Hydraulic	Hydraulic	Hydraulic	Hydraulic	Hydraulic	Hydraulic	Hydraulic	Hydraulic	Hydraulic
IC Engine																	
7.01	Manufacturer / Type		S4Q2 VE 28,0kW01	S4Q2 VE 28,0kW01	S4Q2 VE 28,0kW01		S4S-DPB38kW	S4S-DPB38kW	S4S-DPB38kW	S4S-DPB38kW	K21 LE	K21 LE	K21 LE	K21 LE	K21 LE	K25 LE	K25 LE
7.02	Rated / Nominal output to ISO 1585**	kW	28	28	28		38	38	38	38	41	41	41	41	41	47	47
7.03	Rated speed to DIN 70 020	rpm	2500	2500	2500		2300	2300	2300	2300	2700	2700	2700	2700	2700	2700	2700
7.04	Number of cylinders / cubic capacity	cm3	4 / 2505	4 / 2505	4 / 2505		4 / 3331	4 / 3331	4 / 3331	4 / 3331	4 / 2065	4 / 2065	4 / 2065	4 / 2065	4 / 2065	4 / 2488	4 / 2488
7.05	Fuel consumption according to VDI 60 cycle	l/h / kg/h	/ 2.30	/ 2.35	/ 2.35		/ 2.55	/ 3.20	/ 3.40	/ 3.50	/ 2.10	/ 2.40	/ 2.40	/ 2.40	/ 2.60	/ 3.10	/ 3.50
Miscellaneous																	
8.01	Type of drive control		Powershift / 1	Powershift / 1	Powershift / 1		Powershift / 1	Powershift / 1	Powershift / 1	Powershift / 1	Powershift / 1	Powershift / 1	Powershift / 1	Powershift / 1	Powershift / 1	Powershift / 1	Powershift / 1
8.02	Maximum operating pressure for attachments	bar	180	180	180		180	180	180	180	180	180	180	180	180	180	180
8.03	Oil flow for attachments	l/min	62	62	62		75	75	73	73	60	60	60	68	68	73	73
8.04	Noise level, value at operator's ear (EN 12053)	dB(A)	*	*	*		*	*	*	*	*	*	*	*	*	*	*
8.05	Towing coupling design / DIN type, ref.		PIN	PIN	PIN		PIN	PIN	PIN	PIN	PIN	PIN	PIN	PIN	PIN	PIN	PIN

* Available on request
** Net power according 97/68/EC: 52kW

Lower Cost of Ownership

- Modern design techniques in combination with long life of components result in a long service interval reducing the total cost of ownership.
- Vehicle Control Module manages various truck and operator functions allowing easy trouble shooting and pin pointing of problems.
- LCD display provides extensive information on truck operation and maintenance state. It also indicates service requirements to prevent unexpected down time and cost due to unscheduled maintenance and service.
- LED lights on the front work lights and front/rear combination lights reduce energy consumption and maintenance costs.

Unmatched Productivity

- State-of-the-art LPG engine with engine management system and regulated catalytic converter for great performance, low noise and emission levels. This powerful proven industrial engine also brings efficient fuel usage.
- Fully floating powertrain layout to lower the centre of gravity, increases truck stability and residual lifting capacities.
- Reliable, high performance diesel engine, with low emission levels and low fuel consumption.

Safety and Ergonomics

- Presence Detection System (PDS) prevents truck operation when operator is not seated.
- Low noise levels keep the operator concentrated while reducing fatigue in long shifts.
- Fingertip hydraulic controls mounted on a fully adjustable armrest for optimum load handling and easy maneuverability.
- Operator Pin Code to prevent unauthorized usage of the truck.
- Automotive style pedal layout for easy and comfortable operation.
- Adjustable steering column with memory position that adjusts to operator's preference for comfortable operation.
- Low step in chassis for easy on and off access.

Options

- Full Tilt-able cabin
- Factory fitted panel cabin
- Elevated exhaust
- Additional working lights and revolving lamps
- Integral side shifter
- Manual hydraulic controls



	DP/GP15-18N DP/GP20CN			DP/GP15N		DP/GP18N		DP/GP20CN	
Mast type	h3	h1	h4	h2/h5	Q @ c=500mm	h2/h5	Q @ c=500mm	h2/h5	Q @ c=500mm
	mm	mm	mm	mm	kg	mm	kg	mm	kg
Simplex	3000	1995	4050	80	1500	80	1750	80	2000
	3290	2140	4340	80	1500	80	1750	80	2000
	3700	2400	4770	80	1500	80	1750	80	2000
	4090	2585	5140	80	1500	80	1750	80	2000
	4480	2790	5530	80	1425	80	1700	80	1950
	5000	3050	6050	80	1375	80	1400	80	1400
	5500	3300	6550	80	1000	80	1000		
	6000	3550	7050	80	650	80	650		
Duplex	3000	1995	4050	945	1500	945	1750	945	2000
	3295	2140	4340	1095	1500	1095	1750	1095	2000
	3700	2400	4750	1355	1500	1355	1750	1355	2000
	4030	2585	5080	1535	1500	1535	1750	1535	2000
Triplex	3710	1795	4760	745	1500	745	1750	745	2000
	4010	1895	5060	845	1500	845	1750	845	2000
	4310	1995	5360	945	1425	945	1700	945	1950
	4750	2140	5800	1095	1375	1095	1625	1095	1900
	5090	2260	6140	1215	1325	1215	1325	1215	1325
	5490	2400	6540	1355	1000	1355	1000		
	5990	2585	7040	1535	650	1535	650		
	6490	2845	7540	1795	450	1795	450		
	7000	3050	8050	2005	275	2005	275		

Mast Performance and Capacity

- h1 Height with mast lowered
- h2 Standard free lift
- h3 Lift height
- h4 Height with mast raised
- h5 Full free lift
- Q Lifting capacity, rated load
- c Load centre (distance)

	DP/GP20N - DP/GP25N			DP/GP20N		DP/GP25N		DP/GP30N				
Mast Type	h3	h1	h4	h2/h5	Q @ c=500mm	h2/h5	Q @ c=500mm	h3	h1	h4	h2/h5	Q @ c=500mm
	mm	mm	mm	mm	kg	mm	kg	mm	mm	mm	mm	kg
Simplex	3000	1995	4050	100	2000	100	2500	3030	2050	4090	100	3000
	3300	2145	4340	100	2000	100	2500	3270	2170	4330	100	3000
	3740	2410	4770	100	2000	100	2500	3700	2430	4760	100	3000
	4100	2590	5140	100	2000	100	2500	4000	2610	5060	100	3000
	4500	2800	5530	100	2000	100	2500	4500	2870	5560	100	3000
	5000	3050	6050	100	1950	100	2400	5000	3120	6060	100	2900
	5500	3300	6550	100	1850*	100	2250*	5500	3370	6560	100	2800
	6000	3550	7050	100	1800*	100	2150*	6000	3640	7060	100	2700
Duplex	3000	1995	4050	980	2000	980	2500	3000	2050	4060	1030	3000
	3300	2145	4340	1130	2000	1130	2500	3250	2170	4310	1150	3000
	3700	2410	4750	1390	2000	1390	2500	3700	2430	4760	1420	3000
	4020	2590	5080	1570	2000	1570	2500	4010	2610	5070	1600	3000
Triplex	3730	1800	4760	780	2000	780	2500	3690	1830	4750	810	3000
	4030	1900	5060	880	2000	880	2500	3990	1930	5050	910	3000
	4300	2000	5360	980	1950	980	2500	4320	2050	5380	1030	3000
	4750	2140	5800	1130	1900	1130	2400	4700	2170	5760	1150	3000
	5060	2260	6140	1250	1850	1250	2350	5060	2290	6120	1270	2900
	5500	2400	6540	1390	1800	1390	2200*	5450	2430	6510	1420	2800
	5990	2590	7040	1570	1750*	1570	2100*	5970	2610	7030	1600	2700
	6490	2850	7540	1830	1650*	1830	1750*	6470	2870	7530	1860	2350
	7000	3050	8050	2040	1250*	2040	1250*	7000	3070	8060	2060	1600

	DP/GP35N				
Mast Type	h3	h1	h4	h2/h5	Q @ c=500mm
	mm	mm	mm	mm	kg
Simplex	3000	2180	4060	100	3500
	3300	2300	4360	100	3500
	3720	2510	4780	100	3500
	4000	2770	5060	100	3500
	4500	3010	5560	100	3500
	5000	3260	6060	100	3500
	5500	3510	6560	100	3350
	6000	3760	7060	100	3250
Duplex	3010	2180	4070	1170	3500
	3300	2300	4360	1290	3500
	3720	2625	4780	1610	3500
	4000	2770	5060	1750	3500
Triplex	3730	1940	4790	930	3500
	4010	2060	5070	1050	3500
	4390	2180	5450	1170	3500
	4700	2300	5760	1290	3500
	5030	2450	6090	1430	3450
	5580	2630	6640	1610	3300
	6000	2770	7060	1750	3200
	6510	2940	7570	1930	2350
	7000	3140	8060	2120	1600

DP/GP15-20CN

All dimensions include load backrest. In case load backrest is not used h5 will increase by 410 mm, while h4 will decrease by 410 mm.

DP/GP20-35N

All dimensions include load backrest. In case load backrest is not used h5 will increase by 390 mm (20N, 25N), 350 mm (30N), 240 mm (35N), while h4 will decrease by 390 mm (20N, 25N), 350 mm (30N), 240 mm (35N).

The capacities are applicable for pneumatic shaped solid tyres (SE).

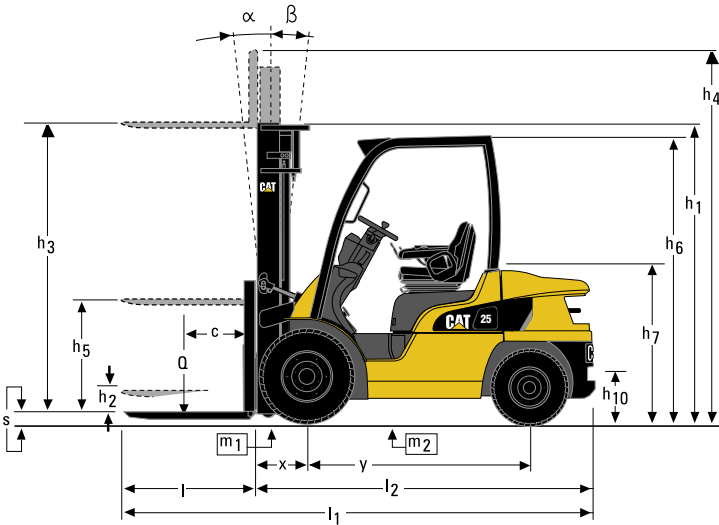
* Capacities shown require truck equipped with dual tyres. Consult your dealer for the maximum back tilt allowed, to obtain the capacities specified.

Cat Lift Trucks is renowned for its worldwide distribution network, but you will always find an experienced and dedicated team of professionals close to you. Individuals committed to helping you maximise profits.

With Cat Lift Trucks, your investment is in safe hands.

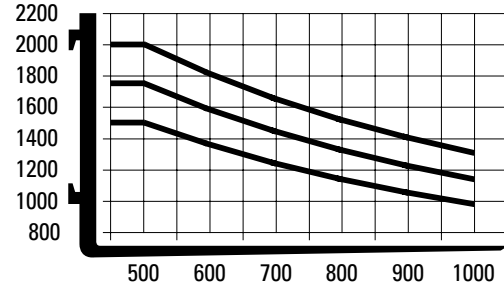
Cat® Lift Trucks.

Your partner in materials handling.

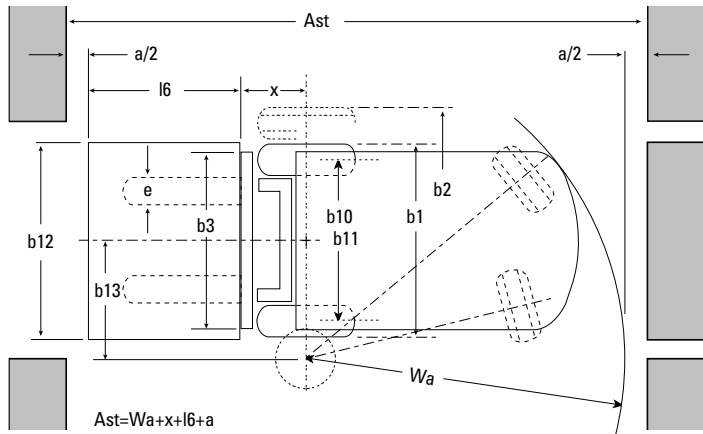


Capacity vs. Load Distance

Simplex - h3 = 3290 mm



DP/GP20CN
DP/GP18N
DP/GP15N

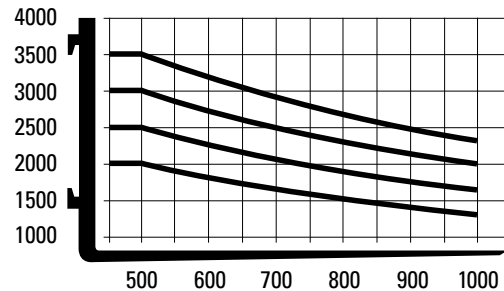


$$Ast = Wa + x + l6 + a$$

- Ast = Working aisle width with load
- a = Safety clearance (200 mm)
- l6 = Pallet length (800 or 1000 mm)
- b12 = Pallet width (1200 mm)

Capacity vs. Load Distance

Simplex - h3 = 3290 mm



DP/GP35N
DP/GP30N
DP/GP25N
DP/GP20N

info@catliftruck.com
www.catliftruck.com

CESC1091(12/10)ok
Copyright ©2009, MCFE. All rights reserved.
CAT, CATERPILLAR their respective logos,
'Caterpillar Yellow' and the 'Power Edge' trade
dress, as well as corporate and product identity
used herein, are trademarks of Caterpillar and
may not be used without permission.
Printed in The Netherlands

NOTE: Performance specifications may vary depending on standard manufacturing tolerances, vehicle condition, types of tyres, floor or surface conditions, applications, or operating environment. Trucks may be shown with non-standard options. Specific performance requirements and locally available configurations should be discussed with your Cat lift trucks Dealer. Cat Lift Trucks follows a policy of continual product improvement. For this reason, some materials, options and specifications could change without notice.

CAT® Lift Trucks