

FORKFORCE[®]

A SERIES FORKLIFT TRUCK

A series 2.0-3.5 ton diesel forklift

A series 2.0-3.5 ton Gasoline / LPG forklift



Visit our brand new website:
forkforce.com

FORKFORCE[®]

1300 4A FORK
1300 423675



SALES



HIRE



SERVICE



REPAIRS



PARTS



ATTACHMENTS

Engineering for driver

Fork Force's New "A" Series Forklift is engineering for the driver. Fork Force engineers have focused on improving the comfort and safety for new A series forklifts, with lower noise levels, less vibration, more safety, and every small detail carefully designed prepared for the driver.

-Comfort-

Fork Force special display with 3.5" LCD
Wider foot room & Suspension foot brake.
Dual suspension system
New hand parking brake device with button greatly reduces fatigue in operation.
Small diameter steering wheel with new adjustor ✓

1

-Safety & Stability-

Wide view mast
High strength safe guard/cabin
Muffler & Engine protective system
Lower centre of gravity ✓

2

-Easily maintenance-

Bigger checking & repair space
Compact wire distribution
New type oil tank cap ✓

3

-Reliability & Exchangeability-

Triplex plate overhead guard
Exchangeable components ✓

4

5

-Energy saving & Environmental protection-

New noise isolation material
Powerful steering system with lower fuel consumption
Environmentally-aware design ✓



Comfort, safe and stable design

Engineering from the perspective of drivers



1

Fork Force special display with 3.5" LCD

Fork Force A series forklift adopts 3.5" LCD display, tailored specifically for drivers, aimed at increasing the convenience and comfort in view of the display data when driving and operating forklift. ✓



2

Wider foot room & Suspension foot brake

New spacious foot room



New spacious foot room design expands the space, guarantee drivers access the forklift comfort, convenience and safety. ✓



New suspension pedals

At the same time, new suspension pedals provide extra foot space helps significantly reduce the driver's fatigue, increase operator comfort. ✓

3

New hand parking brake

New hand parking brake device with button greatly reduces fatigue in operation, lighter and safer. ✓

Reduces fatigue

Lighter and safer

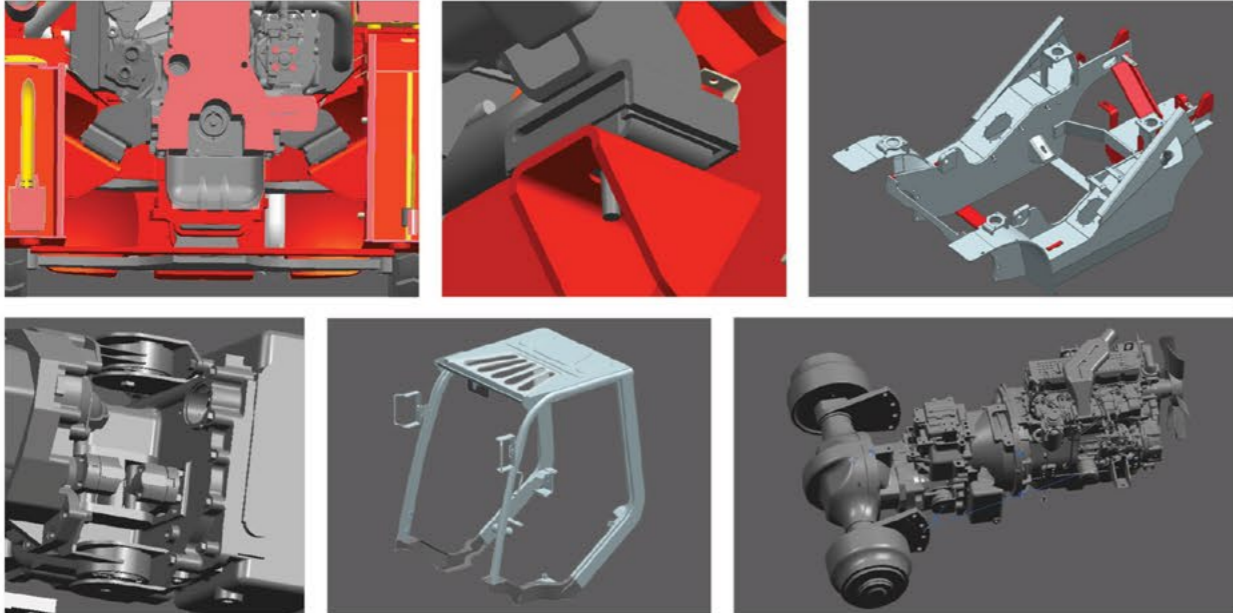


4 Dual suspension system

In A series forklift, Fork Force is specialized R & D to launch dual-suspension system, for further vibration decreasing.

Dual suspension system—Full floating safeguard/cabin system & New engine vibration damper

Dual suspension system— Suspension transmission replaces traditional rigid connections, greatly improving the forklift's vibration and noise. ✓



5 Small diameter steering wheel with new adjustor

Size of A series forklift steering wheel is reduced, outer diameter becomes $\Phi 300$, small-diameter steering wheel is easier to manipulate, more responsive, it ensures the mobility when working in a narrow space.

Meanwhile, steering wheel adjustor has been improved, convenient adjusting steering wheel increases angle to 8° , adapting to different drivers. ✓



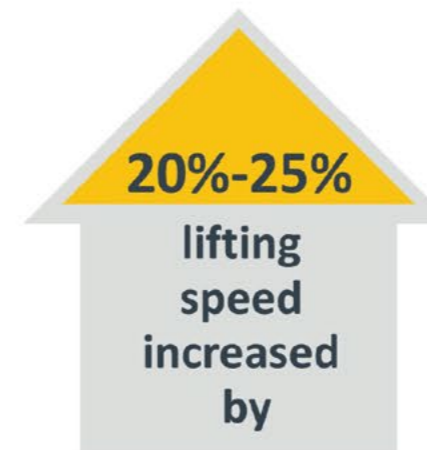
6 Wide view mast

Overall Fork Force A series forklift mast adopts wide view mast, outside width of the mast increases from the M series 690 mm to 720 mm, significantly improves the driver's front field of view, reduces dead zones, and increases the safety and comfort of the operation. ✓



7 Improved lifting speed

Lifting speed increased by 20%—25%. ✓



8

High strength safe guard/cabin



Cabin for A series forklift adopts profiled steel overhead guard, all around inserted.

High strength roof enhances the forklift reliability and safety, and high strength organic glass ceiling as standard also makes forklift body looks more beautiful.

Improve mast composite roller structure, thereby greatly enhancing the forklift reliability. ✓

9

Muffler & Engine protective system

Muffler protective net and engine protective net equipped in A series forklift as standard makes the forklift be more safer when working. ✓



Muffler protective net



Engine protective net

10

Lower centre of gravity

Lower centre of gravity, increase the driver's rear field of view. A series forklift reduces 50 mm of centre of gravity on base of M series forklift. Lower counterweight greatly increases the rear vision, avoid safety hazards when driver reversing. ✓



Lower counterweight

Lower centre of gravity
▷ 50mm ◁



Energy conservation and emission reduction, easily installed and serviced.

Highlight the humanized design!

1

Bigger checking & repair space



Fork Force designed larger repair space for A series, it's convenient to have big checking and repairing.

2

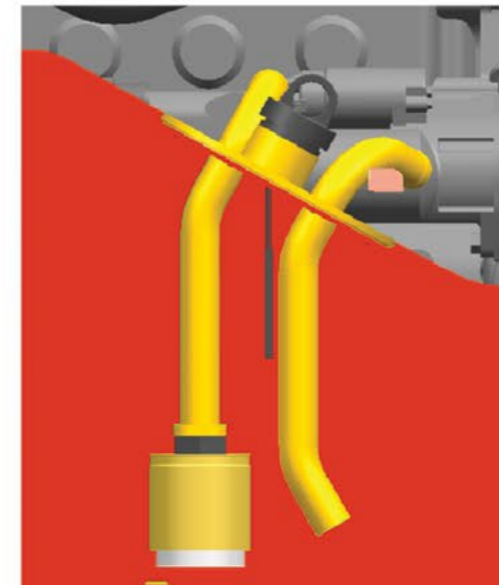
Compact wire distribution



3

New type oil tank cap

New type oil tank cap combined with breather & dipstick.



4

Exchangeable components



Front fender is installed with holes

Engine cover, instrument panel, safeguard, display and most of the operation components are exchangeable between 1- Mini 4 ton forklifts.

Front fender is installed with holes, which is very convenient for the customer to put on for double front tires.

5 Triplex plate overhead guard

Fork Force Australia A series forklift overhead guard is developed with three pieces, it is consist of left side, right side and top basket, the advantage is the cabin except top basket can be installed directly on the standard safeguard. This design, greatly improves the efficiency and ease, the forklift operator can put on and off the cabin easily. ✓



6 New noise isolation material



Special muffler and new noise isolation material, reducing noise levels by more than 4DB. ✓

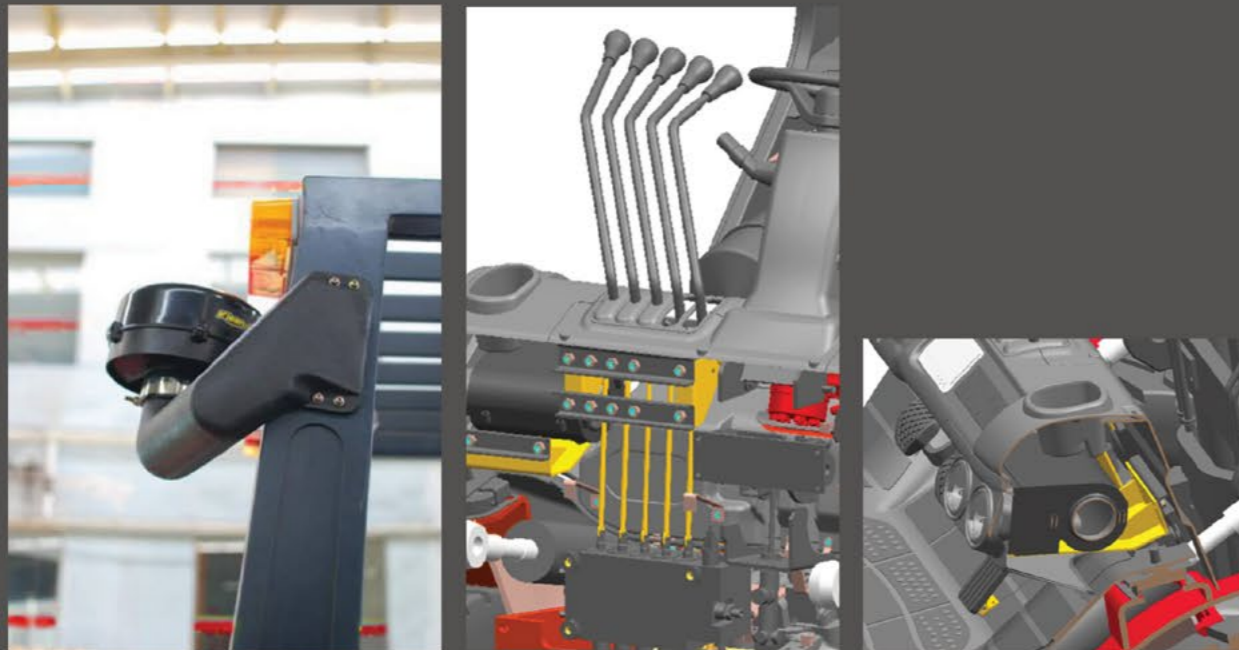
7 Powerful steering system with lower fuel consumption

New dynamic load-sensing hydraulic steering system improves work efficiency and energy conservation, with fuel consumption reduced by 8%. ✓



Various of kinds of options especially for A series

- 1 New designed heater
- 2 5-way hydraulic valves
- 3 Pre-cleaner



A series 2.0-3.5t diesel forklift

1		Model		FD20T	FD25T	FD30T	FD35T			
General	2	Type		AWE5/AWV5/AG(2)5/AWV3/AGJ3						
	3	Power Type		Diesel						
	4	Rated Capacity	kg	2000	2500	3000	3500			
	5	Load Centre	mm	500	500	500	500			
	6	Lift height	mm	3000	3000	3000	3000			
	7	Mast tilt angle	F/R	Deg	6/12	6/12	6/12	6/12		
	8	Fork	L×W×T	mm	1070×122×40	1070×122×40	1070×125×45	1070×130×50		
	9		Regulating range	mm	250-1000	250-1000	250-1060	260-1060		
	10	Front overhang	mm	475	475	490	501			
	11	Rear Overhang	mm	485	544	543	623			
Characteristic&Dimension	12	Min. ground clearance (Bottom of mast)	Unladen	mm	130	130	155	155		
	Laden		mm	120	120	145	145			
	14	Min. ground clearance (Bottom of frame)	Unladen	mm	125	125	145	145		
	15		Laden	mm	115	115	130	130		
	16	Overall demensions	Overall length (without forks)		mm	2560	2620	2704	2804	
	17		Overall width		mm	1150	1150	1210	1210	
	18		Overall height	Overhead guard height	mm	2130	2130	2155	2155	
	19			Mast	mm	2010	2010	2075	2075	
	20	Mast extended height	mm	3990	3990	4100	4100			
	21	Min. turning radius	mm	2180	2230	2450	2520			
22	Wheelbase	mm	1600	1600	1700	1700				
23	Traction pin height from the ground	mm	250	250	480	480				
24	Lowered seat to overall guard inside height	mm	1100	1100	1100	1100				
Performance	25	Tyre pressure	Front	MPa	0.86	0.86	0.97	0.97		
	26		Rear	MPa	0.86	0.86	0.79	0.79		
	27	Tread	Front	mm	890	890	1000	1000		
	28		Rear	mm	920	920	970	970		
	29	Tire center height from the ground	Unladen	Front	mm	320	320	345	345	
	30			Rear	mm	250	250	260	260	
	31		Laden	Front	mm	310	310	330	330	
	32			Rear	mm	265	265	280	280	
	Performance	33	Speed	Travel (Unladen/Laden)		km/h	18/17.5	18/17.5	19/18	19/18
		34		Lifting(Unladen/Laden)		mm/sec	640/610	640/610	550/520	430/410
35		Lowering(Unladen/Laden)		mm/sec	380/420	380/420	400/380	400/380		
36		Max.Drawbar pull (Unladen/Laden)		KN	15/17	15/17	15/17	15/17		
37		Max.Gradeability (Unladen/Laden)		%	20	20	20	20		
Weight	38	Ramp parking brake		%	15	15	15	15		
	39	Braking distance		m	≤6	≤6	≤6	≤6		
	40	System pressure		MPa	20	20	20	20		
	41	Self weight		kg	3300	3590	4300	4680		
	42	Weight Distribution	Laden	Front	kg	4630	5320	6495	7275	
43	Rear			kg	670	770	805	905		
44	Unladen		Front	kg	1500	1630	1800	1950		
			Rear	kg	1800	1960	2500	2730		

A series 2.0-3.5t Gasoline/LPG forklift

1		Model		FG20T	FG25T	FG30T	FG35T			
General	2	Type		AWA5						
	3	Power Type		Gasoline/LPG						
	4	Rated Capacity	kg	2000	2500	3000	3500			
	5	Load Centre	mm	500	500	500	500			
	6	Lift height	mm	3000	3000	3000	3000			
	7	Mast tilt angle	F/R	Deg	6/12	6/12	6/12	6/12		
	8	Fork	L×W×T	mm	1070×122×40	1070×122×40	1070×125×45	1070×130×50		
	9		Regulating range	mm	250-1000	250-1000	250-1060	260-1060		
	10	Front overhang	mm	475	475	490	501			
	11	Rear Overhang	mm	485	544	543	623			
Characteristic&Dimension	12	Min. ground clearance (Bottom of mast)	Unladen	mm	130	130	155	155		
	Laden		mm	120	120	145	145			
	14	Min. ground clearance (Bottom of frame)	Unladen	mm	125	125	145	145		
	15		Laden	mm	115	115	130	130		
	16	Overall demensions	Overall length (without forks)		mm	2560	2620	2704	2804	
	17		Overall width		mm	1150	1150	1210	1210	
	18		Overall height	Overhead guard height	mm	2130	2130	2155	2155	
	19			Mast	mm	2010	2010	2075	2075	
	20	Mast extended height	mm	3990	3990	4100	4100			
	21	Min. turning radius	mm	2180	2230	2450	2520			
22	Wheelbase	mm	1600	1600	1700	1700				
23	Traction pin height from the ground	mm	250	250	480	480				
24	Lowered seat to overall guard inside height	mm	1100	1100	1100	1100				
Performance	25	Tyre pressure	Front	MPa	0.86	0.86	0.97	0.97		
	26		Rear	MPa	0.86	0.86	0.79	0.79		
	27	Tread	Front	mm	890	890	1000	1000		
	28		Rear	mm	920	920	970	970		
	29	Tire center height from the ground	Unladen	Front	mm	320	320	345	345	
	30			Rear	mm	250	250	260	260	
	31		Laden	Front	mm	310	310	330	330	
	32			Rear	mm	265	265	280	280	
	Performance	33	Speed	Travel (Unladen/Laden)		km/h	18/17.5	18/17.5	19/18	19/18
		34		Lifting(Unladen/Laden)		mm/sec	640/610	640/610	550/520	430/410
35		Lowering(Unladen/Laden)		mm/sec	380/420	380/420	400/380	400/380		
36		Max.Drawbar pull (Unladen/Laden)		KN	15/17	15/17	15/17	15/17		
37		Max.Gradeability (Unladen/Laden)		%	20	20	20	20		
Weight	38	Ramp parking brake		%	15	15	15	15		
	39	Braking distance		m	≤6	≤6	≤6	≤6		
	40	System pressure		MPa	20	20	20	20		
	41	Self weight		kg	3300	3590	4300	4680		
	42	Weight Distribution	Laden	Front	kg	4630	5320	6495	7275	
43	Rear			kg	670	770	805	905		
44	Unladen		Front	kg	1500	1630	1800	1950		
			Rear	kg	1800	1960	2500	2730		



MITSUBISHI

Type:WV5/WV3
Model:S4S (EuIII/EPAIII)
Rated output:35.3kw/2250rpm
Rated torque:
177N·m/1700rpm
No. of cylinder:4
Bore×Stroke:94×120mm
Displacement:3.331L



YANMAR

Type:WE5
Model:4TNE98(EuIII/EPAIII)
Rated output:42.1kw/2300rpm
Rated torque:
186.206N·m/1700rpm
No. of cylinder:4
Bore×Stroke:98×110mm
Displacement:3.318L



XINCHAI

Type:GJ3
Model:A498BT1(EuIII/EPAIII)
Rated output:38.8kw/2400rpm
Rated torque:
188N·m/1600-1800rpm
No. of cylinder:4
Bore×Stroke:98×106mm
Displacement:3.168L



NISSAN

Type:WA5
Model:K25
Rated output:37.4kw/2300rpm
Rated torque:171.2N·m/1600rpm
No. of cylinder:4
Bore×Stroke:89×100mm
Displacement:2.483L



DEUTZ

Type:AG(2)5
Model:CA498-05T3(EuIII)
Rated output:36.9kw/2500rpm
Rated torque:
190N·m/1800rpm
No. of cylinder:4
Bore×Stroke:98×106mm
Displacement:3.168L

