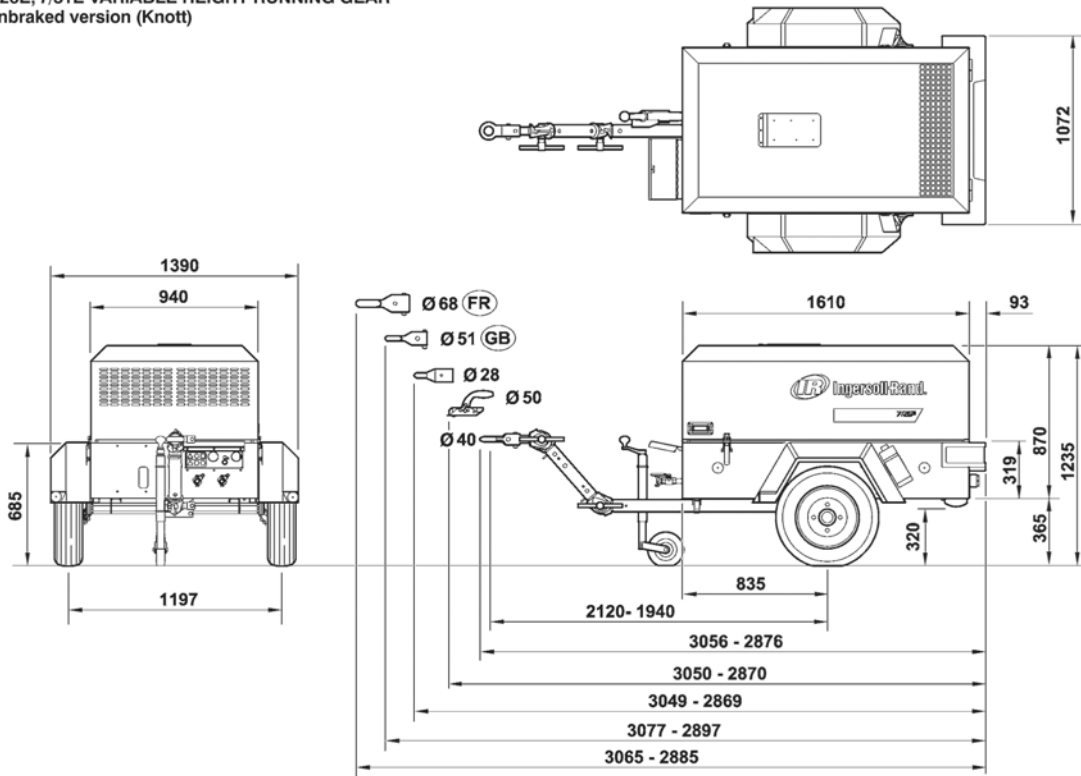
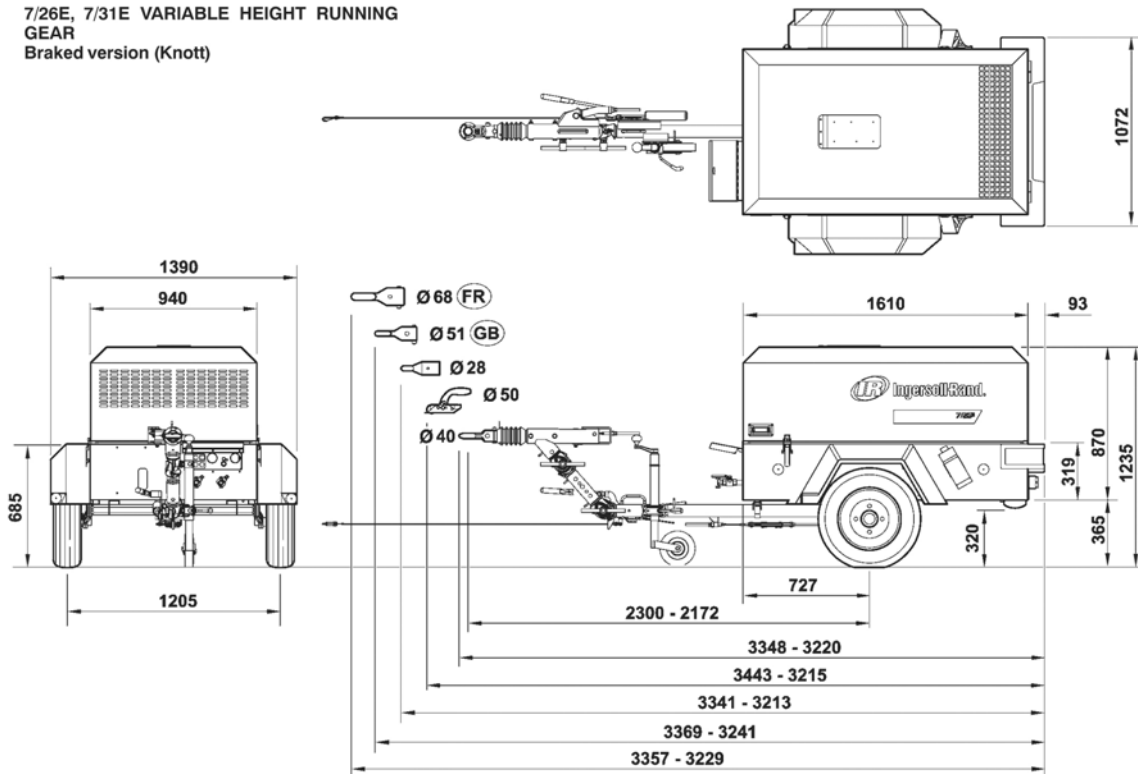


General Information

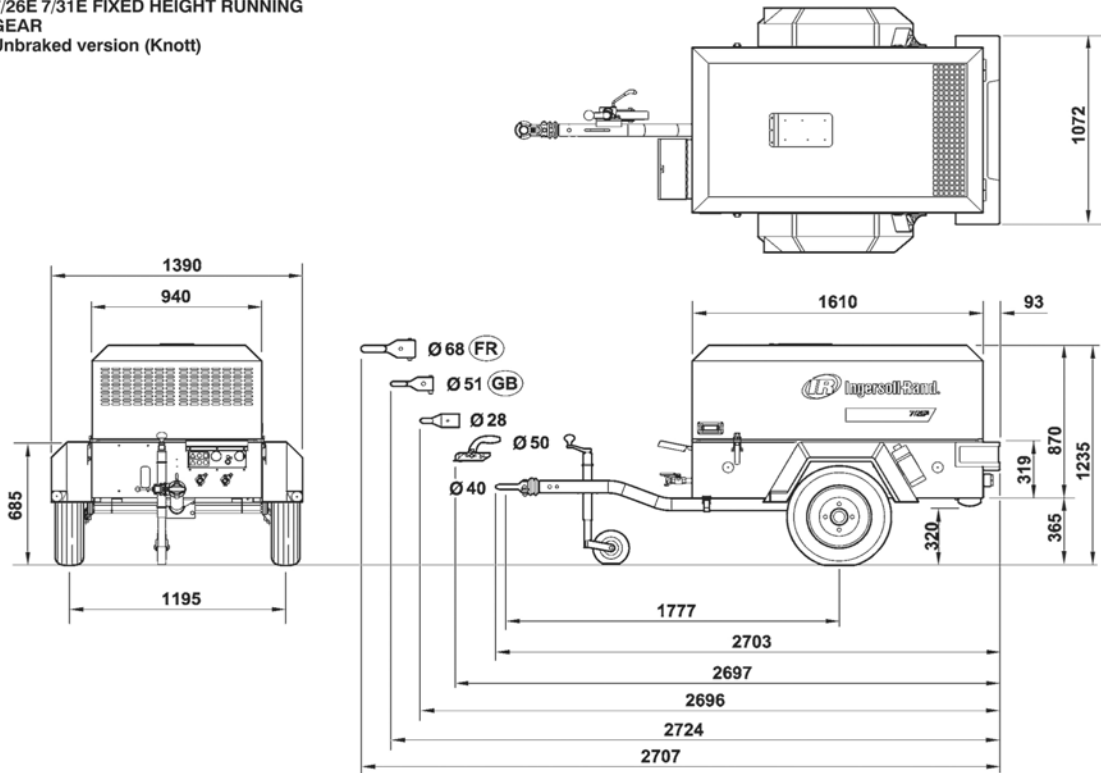
7/26E, 7/31E VARIABLE HEIGHT RUNNING GEAR
Unbraked version (Knott)



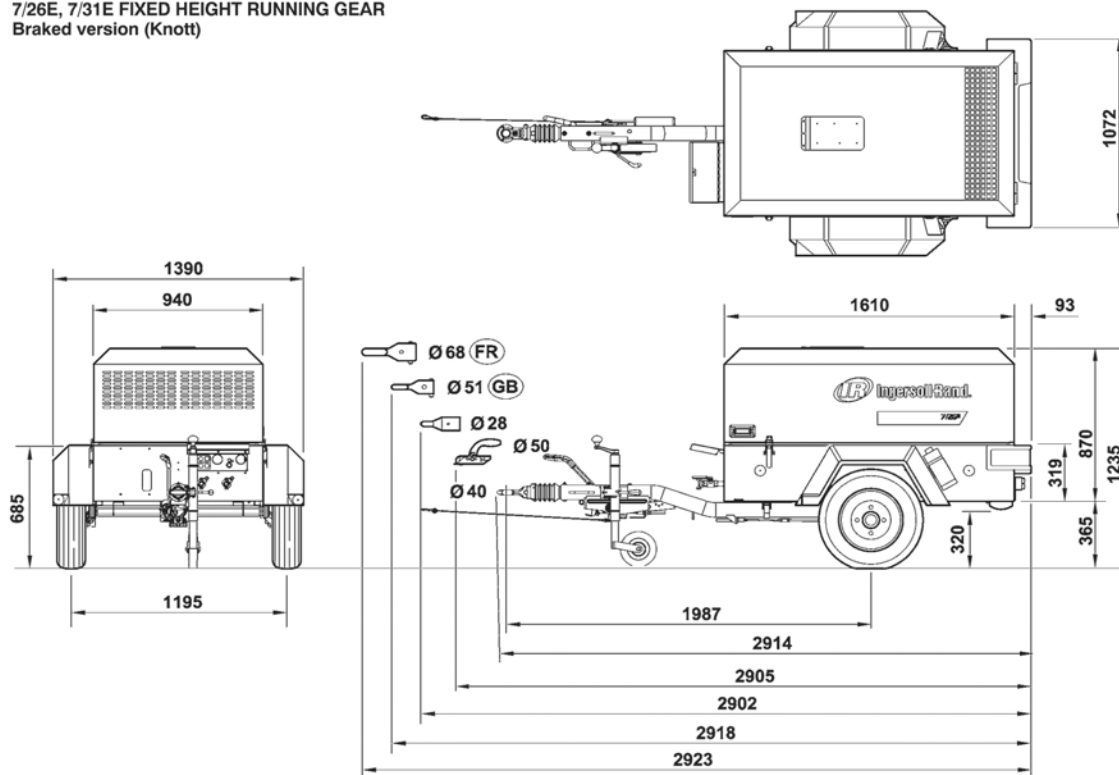
7/26E, 7/31E VARIABLE HEIGHT RUNNING GEAR
Braked version (Knott)



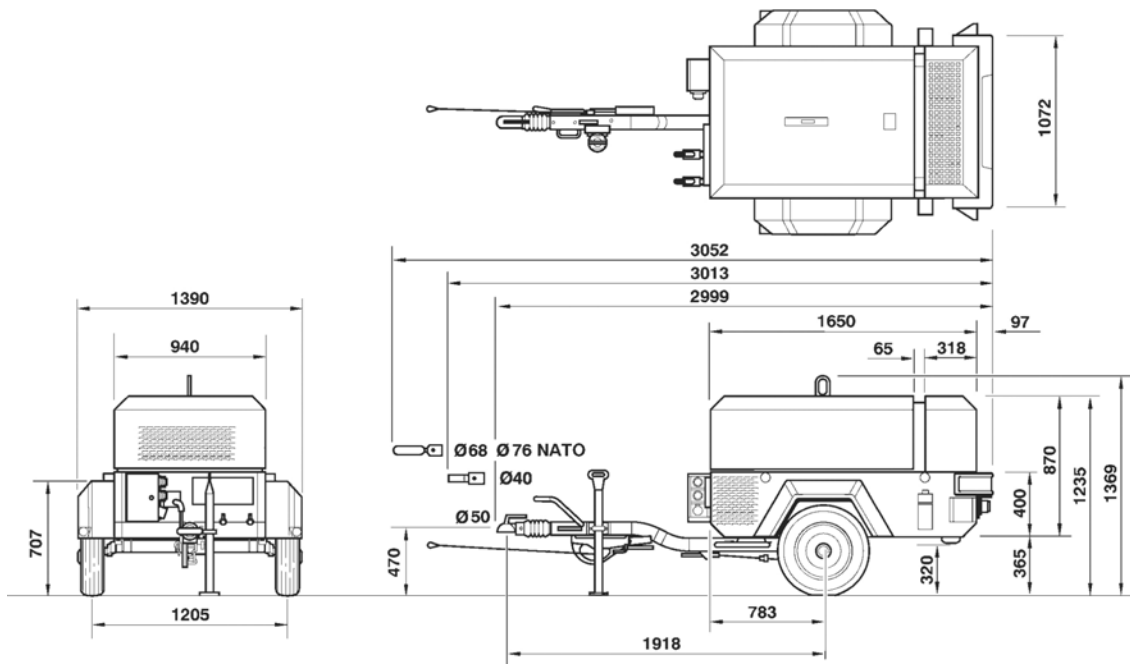
7/26E 7/31E FIXED HEIGHT RUNNING GEAR
Unbraked version (Knott)



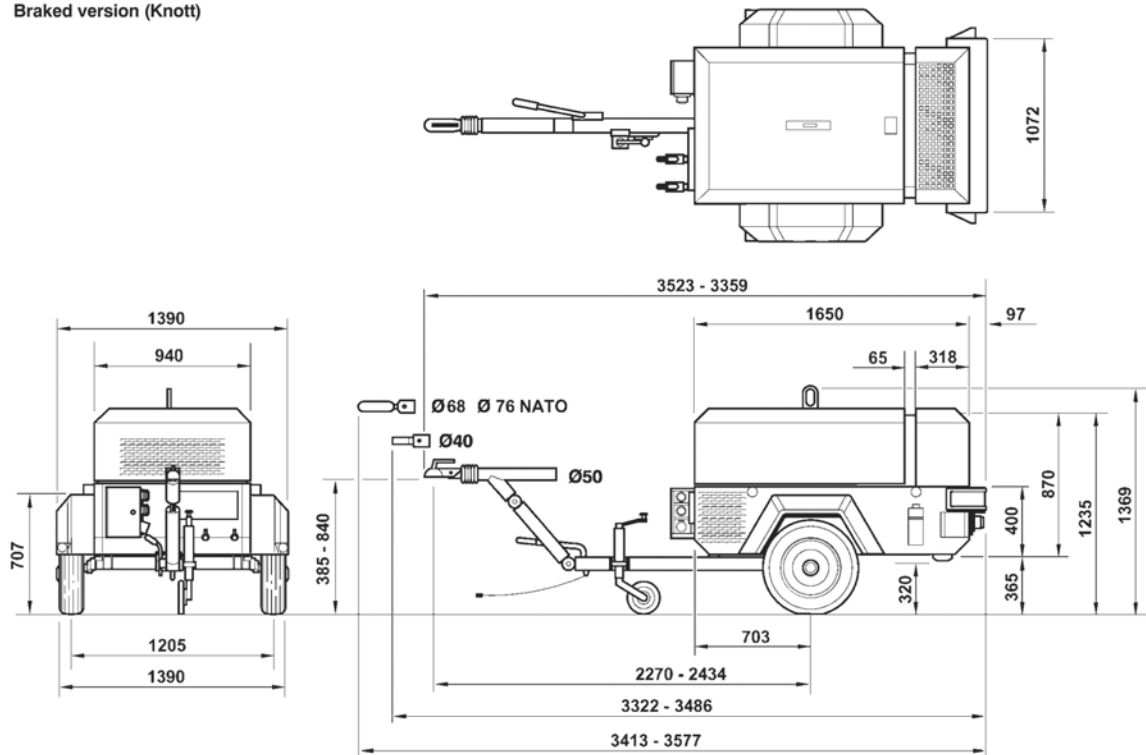
7/26E, 7/31E FIXED HEIGHT RUNNING GEAR
Braked version (Knott)



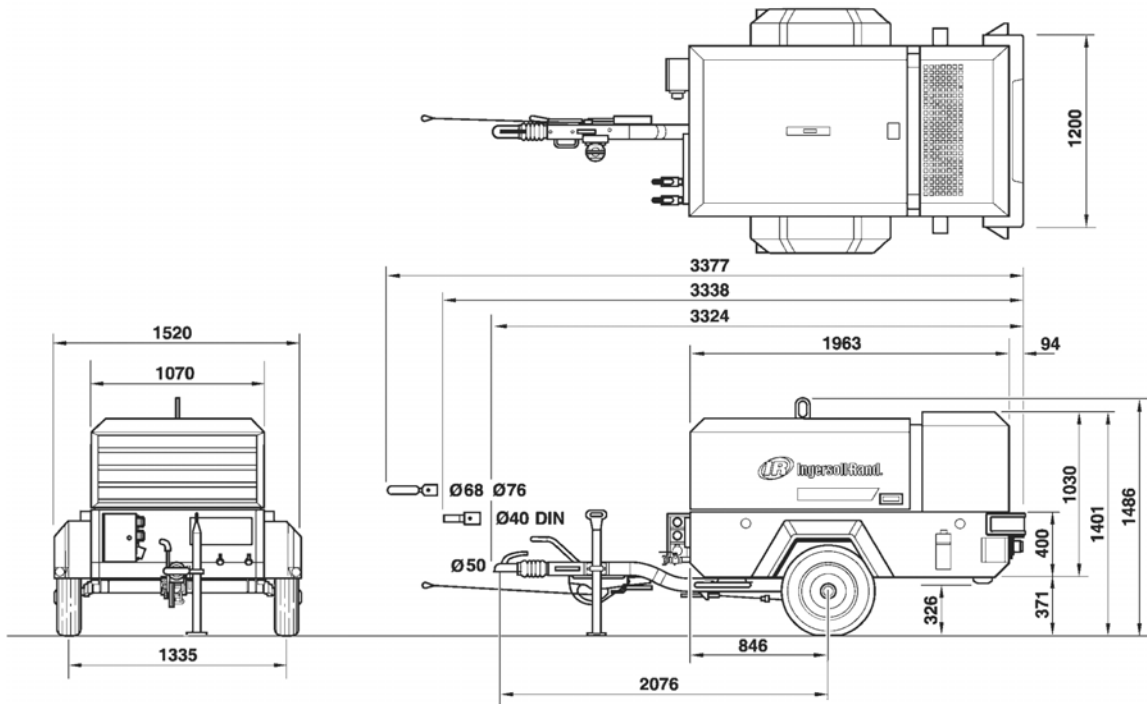
7/41 FIXED HEIGHT RUNNING GEAR
Braked version (Knott)



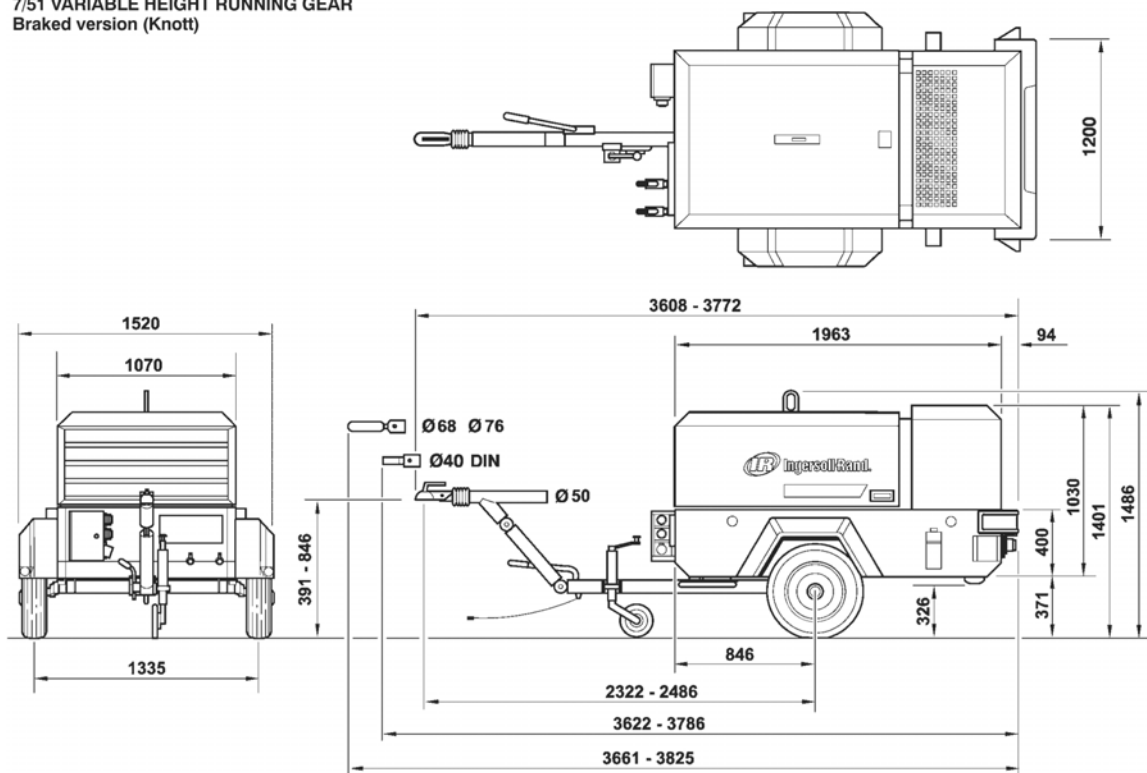
7/41 VARIABLE HEIGHT RUNNING GEAR
Braked version (Knott)



7/51 FIXED HEIGHT RUNNING GEAR
Braked version (Knott)



7/51 VARIABLE HEIGHT RUNNING GEAR
Braked version (Knott)



Compressor

Actual free air delivery (7/26E)	2.5 m ³ min ⁻¹ (90 CFM)
Actual free air delivery (7/31E)	3.0 m ³ min ⁻¹ (105 CFM)
Actual free air delivery (7/41)	4.0 m ³ min ⁻¹ (140 CFM)
Actual free air delivery (7/51)	5.0 m ³ min ⁻¹ (175 CFM)
Normal operating discharge pressure.	7 bar (100 PSI)
Maximum allowable pressure.	8.6 bar (125 PSI)
Safety valve setting.	10 bar (145 PSI)
Maximum pressure ratio (absolute).	7.5 : 1
Operating ambient temperature.	
Whisperised	-10° C to +46° C (14° F to 115° F)
Standard	-10° C to +52° C (14° F to 126° F)
Maximum discharge temperature.	120° C (248° F)
Cooling system.	Oil injection
Oil capacity (7/26E), (7/31E)	7.0 litres (1.8 US GAL)
Oil capacity (7/41)	8.0 litres (2.1 US GAL)
Oil capacity (7/51)	10.5 litres (2.8 US GAL)
Maximum oil system temperature.	120° C (248° F)
Maximum oil system pressure.	8.6 bar (125 PSI)

Lubricating Oil Specification

(for the specified ambient temperatures).

ABOVE -23° C(-9° F)

Recommended: Pro-Tec™

Approved: SAE 10W, API CF-4/CG-4

BELOW -23° C(-9° F)

Mandatory: IR Performance 500

Ingersoll Rand Pro-Tec™ compressor fluid is factory-fitted, for use at all ambient temperatures above -23° C(-9° F).

NOTE: Warranty may be extended only by continuous use of Pro-Tec™ and Ingersoll Rand oil filters and separators.

No other oil/fluids are compatible with Pro-Tec™.

No other oils/fluids should be mixed with Pro-Tec™ because the resulting mixture could cause damage to the airend.

In the event that Pro-Tec™ is not available and/or the end user needs to use an approved single grade engine oil, the complete system including separator/receiver, cooler and pipework must be flushed clear of the first fill fluid and new Ingersoll Rand oil filters installed. When this has been completed, the following oils are approved:

- a. for ambient temperatures above -23° C (-9° F), SAE 10W, API CF-4/CG-4.
- b. for ambient temperatures below -23° C (-9° F), IR Performance 500 only.

Safety data sheets can be obtained on request from the lubricant supplier.

For temperatures outside the specified ambient range, consult Ingersoll Rand.

Engine 7/26E

Type/model.	Ingersoll Rand 3IRH2N
Number of cylinders.	3
Oil capacity.	5.5 litres
Speed at full load.	2800 revs min ⁻¹
Speed at idle.	1700 revs min ⁻¹
Electrical system.	12V negative earth
Power available at 2800 revs min ⁻¹ .	21.2kW (28.5 HP)
Fuel tank capacity.	50 litres (11 US GAL)
Oil specification.	Refer engine section
Coolant capacity.	5 litres (1.3) US GAL

Engine 7/31E

Type/model.	Ingersoll Rand 3IRH8N
Number of cylinders.	3
Oil capacity.	6.7 litres (1.8 US GAL)
Speed at full load.	2800 revs min ⁻¹
Speed at idle.	1800 revs min ⁻¹
Electrical system.	12V negative earth
Power available at 2800 revs min ⁻¹ .	26kW (34.8 HP)
Fuel tank capacity.	50 litres (11.0 US GAL)
Oil specification.	Refer engine section
Coolant capacity.	5.0 litres (1.3 US GAL)

Engine 7/41

Type/model.	Ingersoll Rand 4IRH8N-2
Number of cylinders.	4
Oil capacity.	7.4 litres (1.9 US GAL)
Speed at full load.	2800 revs min ⁻¹
Speed at idle.	1500 revs min ⁻¹
Electrical system.	12V negative earth
Power available at 2800 revs min ⁻¹ .	35kW (47.0 HP)
Fuel tank capacity.	40 litres (10.6 US GAL)
Oil specification.	Refer engine section
Coolant capacity.	7.8 litres (2 US GAL)

Engine 7/51

Type/model.	Ingersoll Rand 4IRI8N
Number of cylinders.	4
Oil capacity.	9.5 litres (2.5 US GAL)
Speed at full load.	2400 revs min ⁻¹
Speed at idle.	1600 revs min ⁻¹
Electrical system.	12V negative earth
Power available at 2400 revs min ⁻¹ .	50kW (67.2 HP)
Fuel tank capacity.	50 litres (13.2 US GAL)
Oil specification.	Refer engine section
Coolant capacity.	9 litres (2.4 US GAL)

Sound Level Data ('W' Model)

A. To Pneurop code PN8NTC2.

Equivalent continuous sound pressure level.*

Rated load - 84 dB(A)

(Operator position :-1m from machine)

Sound power level (84/533/EEC) - 98 dB(A)

B. In compliance with 86/188/EEC.

Average sound pressure level at 10m

to 79/113/EEC.* - 70 dB(A)

(*Machine only :- at maximum load in open site conditions)

Fixed Height Running Gear - 7/26E, 7/31E

Unbraked version (Knott) 7/26E, 7/31E

Shipping weight.	620 kg (1370 lbs)
Maximum weight.	745 kg (1640 lbs)
Maximum horizontal towing force.	7.12 kN (1600 lbs)
Maximum vertical coupling load (nose weight).	74.5 kg (165 lbs)

Braked version (Knott) 7/26E, 7/31E

Shipping weight.	650 kg (1440 lbs)
Maximum weight.	745 kg (1640 lbs)
Maximum horizontal towing force.	7.12 kN (1600 lbs)
Maximum vertical coupling load (nose weight).	74.5 kg (165 lbs)

Variable Height Running Gear - 7/26E, 7/31E

Unbraked version (Knott) 7/26E, 7/31E

Shipping weight.	640 kg (1415 lbs)
Maximum weight.	745 kg (1640 lbs)
Maximum horizontal towing force.	7.12 kN (1600 lbs)
Maximum vertical coupling load (nose weight).	74.5 kg (165 lbs)

Braked version (Knott) 7/26E, 7/31E

Shipping weight.	670 kg (1480 lbs)
Maximum weight.	745 kg (1640 lbs)
Maximum horizontal towing force.	7.12 kN (1600 lbs)
Maximum vertical coupling load (nose weight).	74.5 kg (165 lbs)

Fixed Height Running Gear - 7/41, 7/51

Braked version (Knott) 7/41

Shipping weight.	650 kg (1430 lbs)
Maximum weight.	800 kg (1760 lbs)
Maximum horizontal towing force.	1233 kgf (2720 lbs)
Maximum vertical coupling load (nose weight).	90 kgf (198 lbs)

Braked version (Knott) 7/51

Shipping weight.	695kg (1790 lbs)
Maximum weight.	1100kg (2430 lbs)
Maximum horizontal towing force.	1233 kgf (2720 lbs)
Maximum vertical coupling load (nose weight).	100 kgf (220 lbs)

Variable Height Running Gear - 7/41, 7/51

Braked version (Knott) 7/41

Shipping weight.	695kg (1530 lbs)
Maximum weight.	800kg (1760 lbs)
Maximum horizontal towing force.	1233 kgf (2720 lbs)
Maximum vertical coupling load (nose weight).	90 kgf (198 lbs)

Braked version (Knott) 7/51

Shipping weight.	862kg (1990 lbs)
Maximum weight.	1100kg (2430 lbs)
Maximum horizontal towing force.	1233 kgf (2720 lbs)
Maximum vertical coupling load (nose weight).	100 kgf (220 lbs)

Wheels and Tyres (Knott)

Number of wheels 7/26E, 7/31E, 7/41, 7/51	2 x 4½ J
Tyre size 7/26E, 7/31E, 7/41, 7/51	155 R13
Tyre pressure 7/26E, 7/31E	2.4 bar (35 PSI)
Tyre pressure 7/41	2.7 bar (39 PSI)
Tyre pressure 7/51	2.9 bar (42 PSI)

Further information may be obtained by request through Ingersoll Rand customer services department.